

For Naturetech® weatherboarding, like any ordinary timber planking, continuous airflow from bottom to top is vital for the long term stability of the product and battens.

We have illustrated some typical situations on domestic and commercial properties which will help architects and builders understand the simple requirements. If these are not adhered to, the warranties will be invalid and costly adjustments will be necessary. Vulcan can accept no responsibility for incorrect installation.

Sequence of work

1. Establish cladding "base line" minimum 150mm above ground level.
2. Attach membrane to the building.
3. Fix corner battens and pack to bring to vertical.
4. Using string lines, pack the battens to create a straight facade.
5. Fix battens around door/window openings and pack to string line.
6. Fix intermediate battens at maximum 407mm centres with ALL details as instructed below.
7. Fix extra battens 200mm long at the bottom for extra support of fly mesh and starter strip

Note: Naturetech can be installed vertically or horizontally. For Prestige or Provincial planks (302mm wide planks), battens can be installed at nominal 278mm centres, i.e. one vertical batten per board. This avoids the need to counter-batten. Detailed instructions below must still be followed.

Batten instructions

A) Below soffit – cut vertical battens 10-15mm short and fit flymesh. On gable soffit add short vertical battens to support angle cut planks.

B) Windows less than 2m long - frame with battens. Cut vertical battens 50mm short above and below to allow airflow around the window.

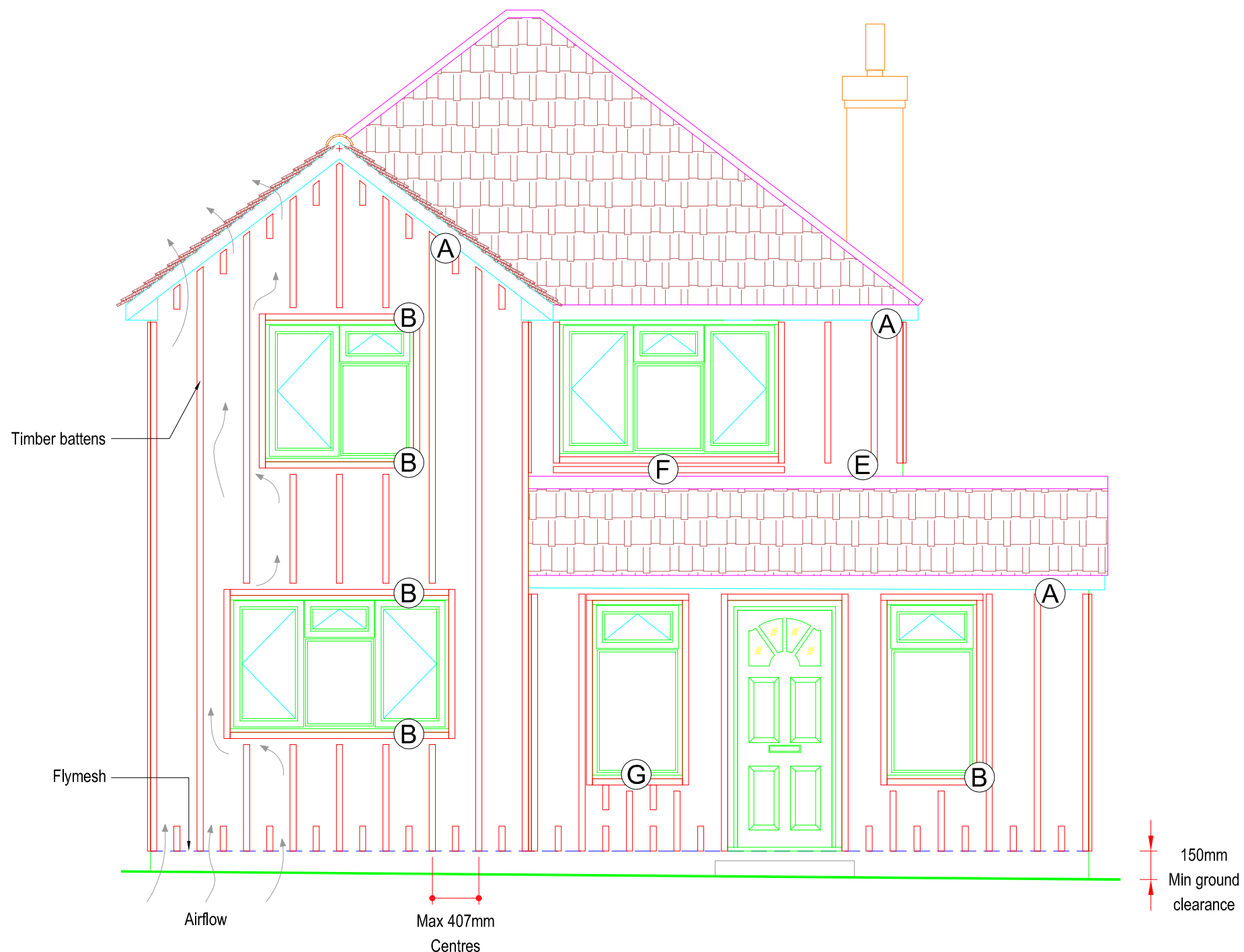
C) Below windows longer than 2m, cut vertical battens 10-15mm short and fit flymesh (no horizontal battens below window).

D) Above windows longer than 2m, cut vertical battens level with window head and fit flymesh (no horizontal battens above window).

E) Above lean-to roof, leadwork should be installed before breather membrane and battens. Vertical battens to be cut 50mm above the roof level.

F) Shallow detail below windows - always ensure full airflow i.e. with horizontal batten as shown or short vertical battens as b.

G) If board fixings coincide with the airflow space, add extra short battens.



VULCAN CLADDING SYSTEMS
 4 Imperial Way, Croydon, CR0 4RR
 T:020 8681 0617
 www.vulcansystems.co.uk

TITLE
Battening Instructions
 Domestic Property

DRAWN:	KDS	© copyright of this drawing is owned by Vulcan Cladding Systems and may not be copied or reproduced in whole or in part without the written permission of Vulcan Cladding Systems.		
CHECKED:	RC	DRAWING NO:	SHEET 1 of 1	ISSUE
SHEET SIZE:	A3	VCS-6748-001		A
SCALE:	NTS at A3			
DATE:	June 15			